



# WP-2 WetPak

## Stationary Horizontal Compactor

### Specifications

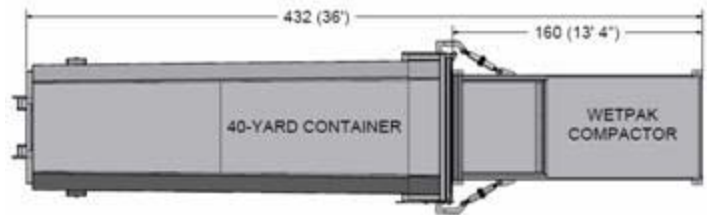
Manufacturer's Rated Size	2 Cubic Yards
Rated Size	1.8 Cubic Yards
Cycle Time	69 Seconds
Capacity Per Hour	93.91 Yards
Clear Top Opening (L x W)	48" x 52 1/2"
Ram Face Dimensions (W x H)	59 3/4" x 24"
Ram Penetration	24"
Cylinder Bore, Rod & Stroke	6" x 4" x 78"
Operating Pressure	
Normal	1500 PSI
Maximum	2000 PSI
Ram Force Rating	
Normal	29.58 PSI / 42,412 Lbs
Maximum	39.43 PSI / 56,549 Lbs
Motor (HP)	10 HP
Pump (GPM)	13 GPM
Tank Capacity	25 Gallons
Shipping Weight	7,500 Lbs (approx)

### Construction

<b>Frame</b>	
Floor – AR Plate	1/2"
Floor Plate Supports	4" – 5.4 Lb Channel
Side Plates	1/4"
Side Reinforcements	6" x 3" x 1/4" Tube
Breaker Bar	6" x 3" x 3/8" Tube
Ram Hold Down Bars	1 1/4" x 1 1/4" Bar
Load Binder Hook-Up	126,000 Lbs Capacity
<b>Ram</b>	
Face Plate	3/4"
Floor – AR Plate	1/2"
Side Plates	3/4"
Top Plate	3/8"
Top Plate Reinforcement	4" – 5.4 Lb Channel

All Specifications are subject to change without notice

### Installation Requirements



#### Minimum Recommended Requirements:

- Concrete Pad: 10' x 40' (May be made larger to suit)  
4,000 PSI Reinforced, 6" Thick
- (4) 3/4" x 4 3/4" Anchor Bolts

#### Minimum Clearance Requirements:

- 12" From Back of Compactor to Wall
- 36" From Right & Left of Compactor to Wall

### Electrical Disconnect Requirements

10 HP Motor		
Voltage	Amperage	Fuse
208	60	50
240	60	40
480	30	20

### Available Options

- Hoppers & Enclosures – Any Configuration
- Through – Wall Chute & Door Framework
- Standard & Full Container Guides
- Pre-Crusher
- Compactor Access Systems
- Drive-On Ramp
- Cart Dumper
- Wheel Wear Plates
- Oil Heater

All Compactors can be customized to Accommodate Any Clear Top Opening

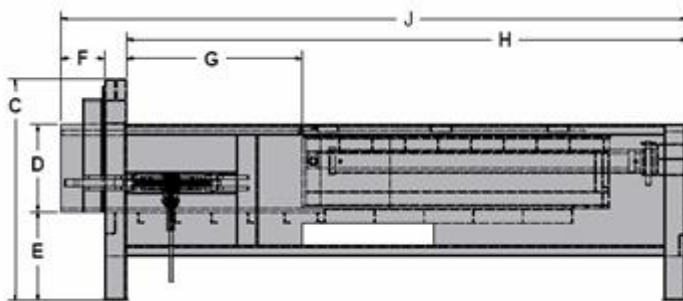
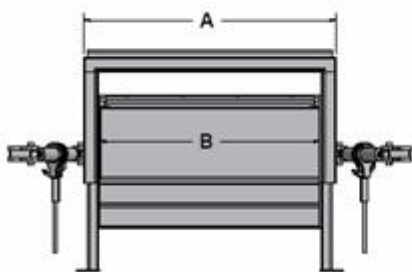


Illustration for reference

A	B	C	D	E	F	G	H	I	J	Capacity
68 3/4"	60"	60 1/2"	23 3/4"	24 1/4"	12"	48"	153"	48"	171"	2 Yards